

INSTALLATION INSTRUCTIONS



CEILING PLATES

25-CMA-105, 25-CMA-110, 25-CMA-115

The Ceiling Plates are designed for ease of installation with any height of drop ceiling. By using any length of standard NPT 1½” pipe threaded both ends, you can extend the height capabilities to meet your needs.

WARNING: IMPROPER INSTALLATION MAY RESULT IN SERIOUS PERSONAL INJURY!

When mounting accessories, the structural system and mounting method **MUST** be capable of supporting 5 times the combined weight of the total installation. The maximum weight to be installed on the ceiling plate is 500 pounds (226.8 Kg).

Unpack and check contents:

- (1) 4” Flat Ceiling Plate 25-CMA-105, 8” Flat Ceiling Plate 25-CMA-110, or 6” Flat Ceiling Plate 25-CMA-115
 - (1) #10-24 Socket Set Screw
 - (1) 3/32” Hex Wrench
- 1. Securely install the ceiling plate to the ceiling joists. (**SEE WARNING ABOVE**)
Bolt hole spacing is shown on Figure 1 (25-CMA 105), Figure 2 (25-CMA-110) and Figure 3 (25-CMA-115).
- 2. Thread your standard NPT 1½” pipe into coupler, tighten securely.
- 3. Install and securely tighten the #10-24 socket set screw.
- 4. Follow the Ceiling Mount Instructions for mating components or mounts.

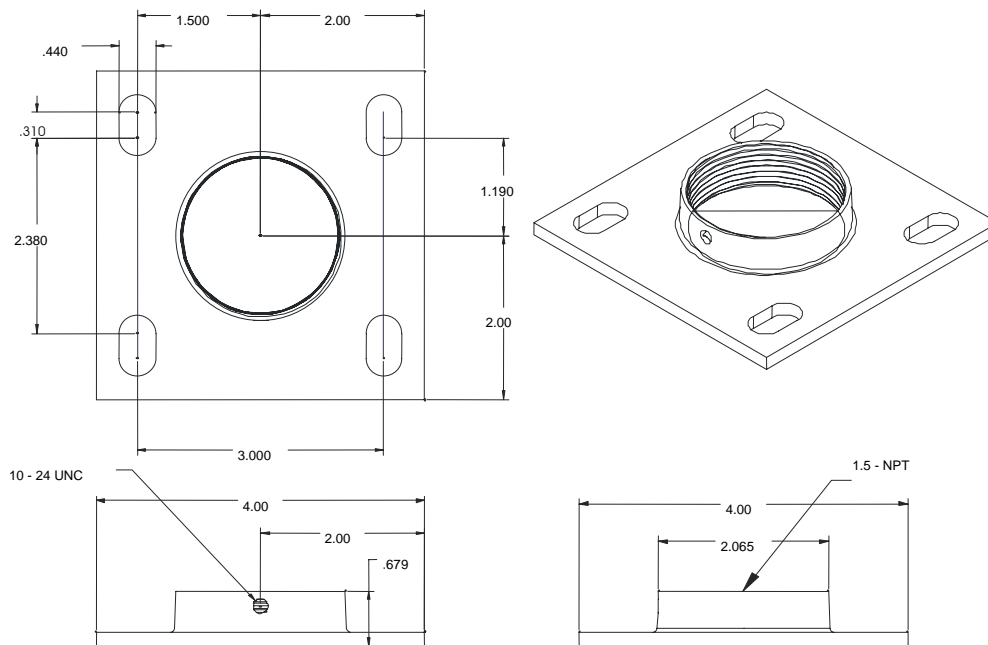


Figure 1. 25-CMA-105 Dimensions

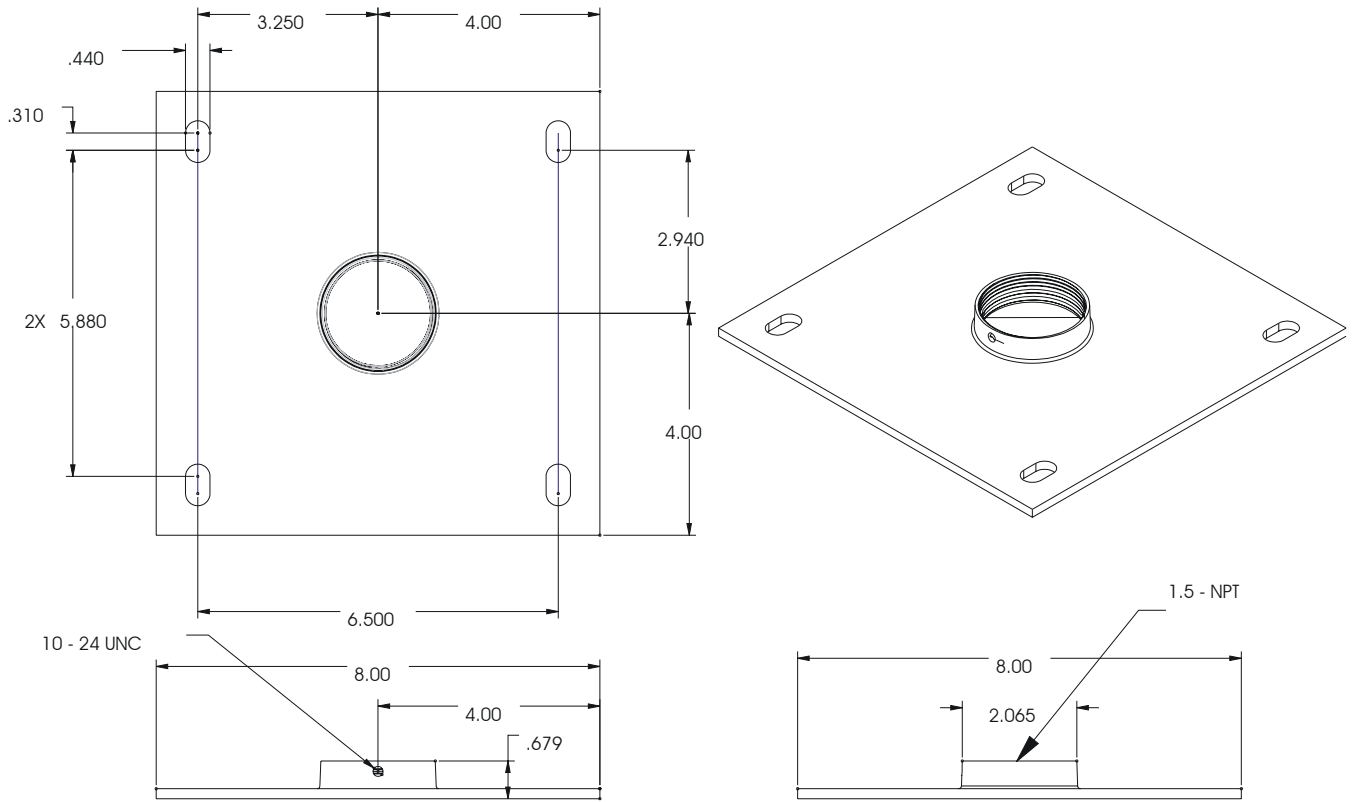


Figure 2. 25-CMA-110 Dimensions

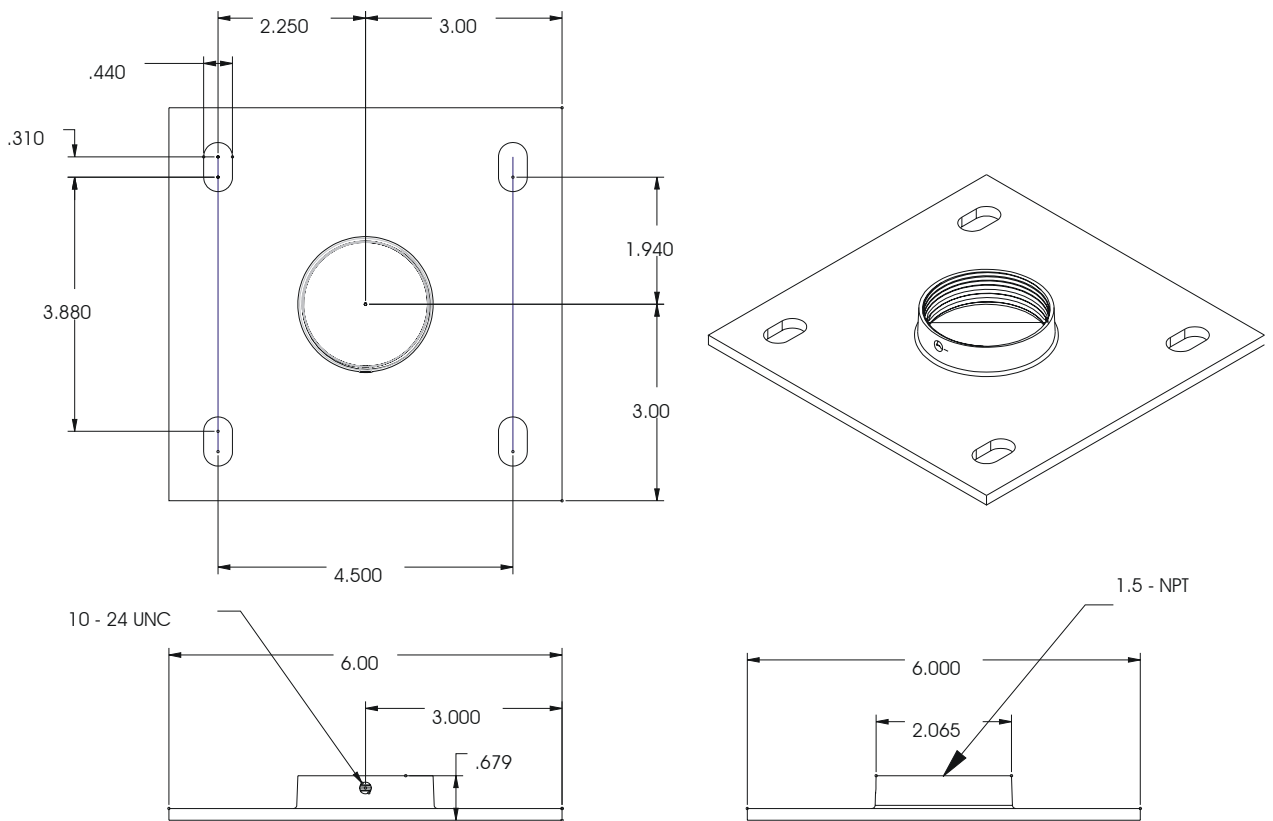


Figure 3. 25-CMA-115 Dimensions